

**WHERE WILL YOUR DREAMS TAKE YOU?**



**CHARTER YACHTS PHUKET**

**We've left other yacht charter companies behind !**



**Modern Sunseeker, 60ft (18m) fast, quality British built yachts.**

**International standard yacht charter now in Phuket, Thailand.**

**Daily or extended cruising.**

**Full safety equipment.**

**Fully air-conditioned.**

**Professional crew.**

**Gourmet food.**

**Email: [info@CharterYachtsPhuket.com](mailto:info@CharterYachtsPhuket.com)**

International Telephone: +66 2 445 1365 International Facsimile: +66 2 445 1364  
Within Thailand Telephone 02 445 1365 Within Thailand Facsimile: 02 445 1364

**Mobile: (English) 087 999 3374 or 087 999 6174**

**and (Thai / English) 086 282 1223**

USA: Telephone +1 818 237 9521 UK: Telephone +44 (0) 207 617 7616  
Charter Yachts Phuket Co. Ltd., Royal Phuket Marina, 63/202 Moo 2,  
Thepkasattri Road, Kohkaew, Muang, Phuket 83200 Thailand

**Phuket Charter Centre: Telephone +66 (0)76 360876**

Copyright 2007. Charter Yachts Phuket Co., Ltd.. All rights reserved.

**2008**

# CHARTER YACHTS PHUKET



**WHERE WILL YOUR DREAMS  
TAKE YOU?**

### CHARTER YACHTS PHUKET ARE DIFFERENT !

There are many different kinds of yacht charter companies operating in Phuket. From long tail boats or speed boats offering short trips to nearby islands to larger local built boats offering excursions to nearby beaches and attractions that carry up to 100 guests.

Established in 2006, Charter Yachts Phuket Co., Ltd. determined to be different. International standard yacht charter using our own British built, fast **Sunseeker Predator** (60 feet / 18 meter) yachts.

Our yachts are modern, professionally maintained and crewed and with full safety equipment. We offer full facilities including air conditioning to all areas, gourmet food, TV / DVD. We choose the **Sunseeker Predator** as it is an ideal yacht for the locality.

Our operation is customer focus and professional from beginning to end. Fully insured and registered and bonded with the Tourism Authority of Thailand (T.A.T.). You can book a private day charter with confidence knowing that you are in good hands.

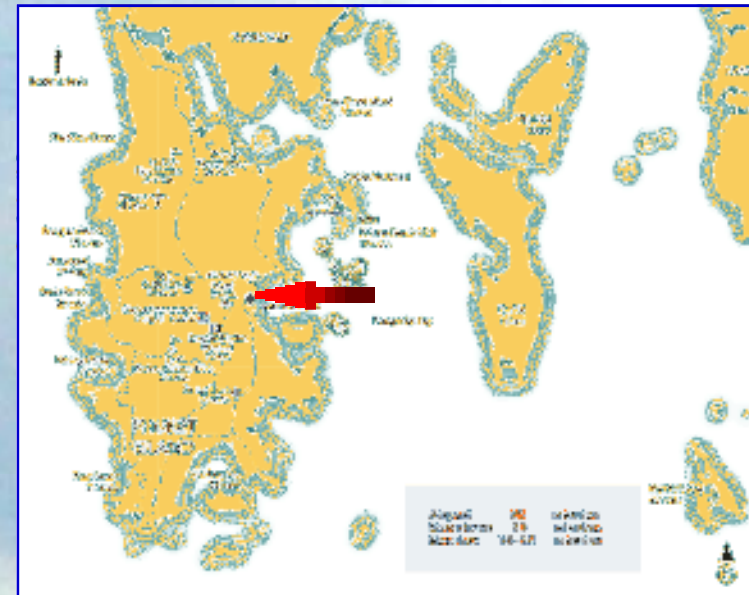
I invite you to come and visit us at The Royal Phuket Marina and see our operation for yourselves.

See you soon !  
**Geoffrey Burt**  
Geoffrey Burt  
Director of Operations  
Charter Yachts Phuket Co., Ltd.

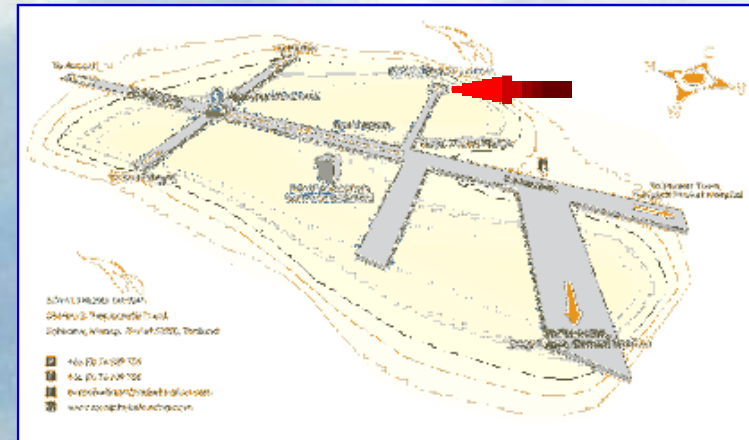


Visit some stunning destinations around Phuket

### HOW TO FIND US:



### LOCAL AREA ROAD MAP:



Our office is located inside directly behind 'Les Anges' restaurant

**SOME OF OUR CONTRACTS MAIN TERMS:**

It is important for all parties that any business arrangement is correctly and fully understood. Below is an outline of our main terms and conditions. However please ask for a full copy of our charter contract or download one from our website!

**WHAT IS INCLUDED:**

Use of yacht and its facilities. Licensed Captain. Engineer & Hostess. VAT at the local rate currently 7% (Aug 2007). Gourmet meals applicable to the charter. Tea, Coffee, Water & soft drinks.

**Cruising times:**

Day Dream Charters 4 hours  
Adventure Charters 3 hours (plus yacht placement)  
Odyssey Charters 7 hours

**Time aboard:**

Day Dream Charters 8 hours  
Adventure Charters 7 hours  
Odyssey Charters 2 days / 1 night  
(Depart 9am / Return 5pm next day)

National Park Fees for all aboard. Transfer to / from your Phuket Hotel / Villa.. Full range of safety equipment

**WHAT IS NOT INCLUDED:**

Meals / drinks ashore. Alcoholic drinks. Cruising / time aboard in excess of hours stated. **Crew gratuities.**

**SOME OF OUR MAIN OBLIGATIONS TO YOU:**

To make all reasonable efforts to ensure the yacht is well maintained, in good seaworthy condition with appropriate safety equipment, with licensed competent crew. To provide the catering ordered. To endeavor to complete the planned itinerary (this is subject to local weather & other conditions at the Captains discretion).

**SOME OF YOUR MAIN OBLIGATIONS TO US:**

To pay the Charter fee in full prior to departure. To provide names & dates of birth for all guests with a copy of the passport of the person booking the charter prior to departure. Not to bring any guns, drugs or any other illegal substance onto the yacht. All guests are to behave in an orderly and law abiding manner whilst aboard. To obey the instructions of the Captain and crew. To limit the number of charter guests to that stated on the booking form / contract. To settle any additional expenses (such as additional cruising hours etc) as they are incurred. Not to smoke inside the yacht. To take care when using the yacht and its facilities. To ensure any children are kept safe whilst on board. Not to damage the yacht by misuse.

**CONTENTS:**

“Mystique”	Pages 4 / 5
“Mysterious Ways”	Pages 6 / 7
Our Crews	Page 8
Eating aboard	Page 9
Menus	Pages 10 / 11
Itineraries	Pages 12 / 23
T.A.T.	Page 24
What are customers say	Page 25
About our contract	Page 26
How to find us	Page 27
Contact information	Page 28

**New for 2008**

**Transfer to your  
yacht by**

**Sea Plane !**

**Look for our**

**“Adventure”**

**Itineraries**



**Visit our website at [www.CharterYachtsPhuket.com](http://www.CharterYachtsPhuket.com)**

## “MYSTIQUE”



### SUNSEEKER PREDATOR 60

The Sunseeker Predators with their sweeping curves and spirited and exciting performance, are stunning motor yachts that are guaranteed to please.

Luxuriously appointed throughout, these craft have entertainment off to a fine art, with ample space for sunbathing and socializing.

Stylish interiors are further enhanced by clever design and immaculate finishing. Two full bathrooms (including shower) are provided.

With full air-conditioning throughout comfort is assured. The yacht has a galley and a separate BBQ is also fitted.

*“If its not Charter Yachts Phuket, its only messing about in boats”*

### WHAT OUR CUSTOMERS HAVE SAID IN 2007:

Our customers views are very important to us. We offer each customer the opportunity to complete a private online survey following each charter. It is only by monitoring our customers experiences that we can be sure we are continuing to meet our own very high standards for each of our charters.

Below are some of our customers recent comments:

**R.B.**

*“Fantastic Day Out, worth every penny. Staff were fabulous, Food was fabulous”*

**L.B.**

*“It was a pleasure”*

**M.B.**

*“A fabulous day out, one that we will never forget. All staff were fantastic. We would not hesitate to sail with you again. A wonderful experience”*

**A.L.**

*“Superb yachts, crew, & food. A memory that we will treasure forever!”*

**J.C.**

**“We have chartered before in Thailand - but it was no match for Charter Yachts Phuket. They are simply the best! Everything was perfect.”**





## TOURISM AUTHORITY OF THAILAND (T.A.T.)

For your protection Charter Yachts Phuket Co., Ltd. are licensed and bonded with the Tourism Authority of Thailand (otherwise known as T.A.T.) Our license gives you reassurance that Charter Yachts Phuket Co., Ltd. meet all the stringent requirements of the Tourism Authority of Thailand.

Many yacht charter companies in Phuket are not officially registered and operate outside government regulations. We believe it is important for our reputation, and the reputation of tourism in Thailand in general that we comply with local laws and regulations.

Phuket offers the opportunity to experience stunning locations. Charter from us with safety and security !



*"We felt safe and secure chartering from professionals"*



### Principle Features:

- Factory fitted aft double bed
- Passerelle
- Holding Tank
- Air Conditioning
- Generator
- Bow Thruster
- Twin stern winches

### Dimensions:

LOA: 18.44m 60'6"  
 Beam: 4.85m 15'11"  
 Draft: 1.35m 4'6"  
 Displacement: 24 tonnes  
 Fuel Capacity: 2850 litres 3627 gallons  
 Water Capacity: 650 litres 143 gallons

### Propulsion:

Engines: Twin MAN, 800hp  
 Drive Type: Shafts  
 Engine Hours: Approx 740  
 Top Speed: 31 knots\*  
 Cruise Speed: 25 knots\*

### Navigational Equipment:

Raytheon R41 Radar  
 Autohelm ST600 Autopilot/Plotter  
 Furuno NX-500 Navtex  
 Electronic Speed, Log & Echo sounder  
 Compass  
 VHF

### Deck Equipment:

Teak cockpit and bathing platform  
 Bow sun pad cushions  
 Griddle  
 Ice maker  
 Fridge  
 Docking  
 Lights

Shore telephone connection

### Mechanical/ Electrical Equipment:

Generator  
 Anchor windlass  
 Bow thruster  
 Chain counter  
 Passerelle  
 Twin stern winches  
 Hydraulic tender garage and winch  
 Reverse cycle Air Conditioning  
 Holding tank  
 Dishwasher TV, DVD and CD Stereo system

### Air Conditioning:

Yes, to all cabins

### Interior Arrangements:

3 cabin layout – 3 cabins (2 doubles and 1 twin)  
 2 vacuum / electronic heads

### Upholstery:

Cream Leather  
 Carpet: Deep Blue

### Wood:

High Gloss Cherry

*\* Subject to local sea and weather conditions All specifications are subject to change without notice*

## “MYSTERIOUS WAYS”



### SUNSEEKER PREDATOR 60

Finished in Cherry Wood with cream leather upholstery and blue carpets this Sunseeker Predator is built and maintained to a High standard with a very high level of specification including a water maker for those longer charters.

A superb handling yacht on the sea she offers accommodation for 6 (overnight) in complete comfort and for 10 on a day charter.

For family cruising and entertainment this luxury , fast British built yacht makes a statement about your lifestyle. Ideal for those overnight charters we are certain you will enjoy your time aboard this fabulous yacht.

Equipped with two large separate sun bathing areas (pads) this yacht provides you every opportunity to enjoy the sunshine in privacy.

Factory fitted with two double bed cabins (plus one twin bedded cabin) this yacht provides excellent accommodation. Two bathrooms (heads) are provided with showers.

The stunning, exciting performance of this yacht is sure to thrill.

*“ A fabulous way to visit the islands in luxury”*



### ITINERARIES—A FINAL WORD

On the last few pages we have described just **some** of our itineraries. Space constraints prevent us from showing all the exciting locations that it is possible to visit around Phuket aboard your own private luxury yacht.

Here are just a few more locations that we have not described:

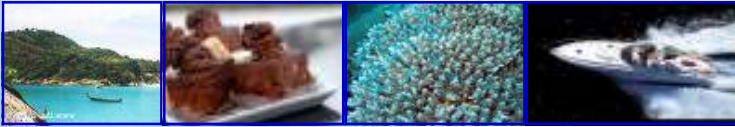
- Ko Phanak (caves by tender)
- Koh Wa Yai or Koh Naka Yai
- Ko Phak Bia beach
- Ko Nakha Yai
- Monkey Beach (Phi Phi area)
- Ko Dam Khwan
- Ko Dam Hok
- Rai Lei beach

Please call us or drop by and we will endeavor to put together a personal itinerary that will meet with your expectations. Chat to our crew and draw on their local knowledge to create that perfect charter.

Perhaps you have a special event that you wish to celebrate (a birthday or anniversary cruise one evening?) in comfort and style.

### LET US MEET YOUR DREAMS.....





### ITINERARY: 3010 DAY DREAM: CLEAR WATER EXPERIENCE

The excellent snorkeling is a delight in the clear water of Koh Racha Yai. The stunning coral abounds around this secluded little known bay and beach and you will be amazed by the dazzling sea life.

Cruise from the Royal Phuket Marina in the air-conditioned comfort of your own private yacht in about two and a half hours. Enjoy the exhilarating cruise and after a swim enjoy a gourmet lunch at anchor.

If there's time visit Egg Island for a cool swim during the return cruise.



### Itinerary:

- Pick up from your Hotel / Villa
- Cruise to Koh Racha Yai.
- Morning snack / drinks
- Visit ashore or explore the coral
- Gourmet meal at anchor
- Cruise to Egg Island. Visit beach / swim
- Afternoon Tea at anchor
- Cruise back to Marina
- Transfer back to your Hotel / Villa



**Koh  
Racha  
Yai**



*"I want to visit again—the sea was beautiful"*



### Principle Features:

- Passerelle
- Holding Tank
- Air Conditioning
- Generator
- Bow Thruster
- Twin stern winches

### Dimensions:

LOA: 17.7m 58'  
Beam: 4.85m 15'11"  
Draft: 1.35m 4'6"  
Displacement: 24.2 tonnes  
Fuel Capacity: 2850 litres 753 gallons  
Water Capacity: 650 litres 143 gallons

### Propulsion:

Engines: Twin Detroit Diesel 8V92 700hp  
Drive Type: Shafts  
Top Speed: 30 knots\*  
Cruise Speed: 23 knots\*

### Navigational Equipment:

Furuno Radar  
Robertson Autopilot  
Garmin /Plotter  
Electronic Speed, Log & Echo sounder  
Compass  
VHF

### Deck Equipment:

Teak cockpit and bathing platform  
Bow sun pad cushions  
Griddle  
Ice maker  
Fridge  
Docking lights

### Shore telephone connection

### Mechanical/ Electrical Equipment:

Generator  
Anchor windlass  
Bow thruster  
Chain counter  
Passerelle  
Twin stern winches  
Hydraulic tender garage and winch  
Reverse cycle Air Conditioning  
Holding tank  
Dishwasher  
Sub Zero Freezer  
Sun Zero Refrigerator  
TV, DVD and CD Stereo system

### Air Conditioning:

Yes, to all cabins

### Interior Arrangements:

3 cabin layout –1 double and 2 twins  
2 vacuum / electronic heads

### Upholstery:

Cream Leather  
Carpet: Off white

## OUR CREWS

The crew is an integral and vital part of a successful charter. We choose our crews carefully. A Captain, Engineer and Hostess is provided for each charter. The Captain and Engineer are qualified and hold appropriate licenses. Many have worked for our principle for a number of years.

Our crews were not the week before working in a restaurant or a supermarket. They know their job, the area and safety. They all share a common passion for the sea. Try us once and you will see what's sets us apart, when we do things we do it right.

When people have booked and paid for a week in a five star hotel and then go on to desert that same hotel for three of those days on one of our yachts we know we are doing something right. There are few things nicer for a charter operator to hear from sophisticated guests than "This has been the most memorable day of our stay in Phuket".

Geoffrey Burt's motto: "Do it well or not at all".

People enjoying seamless service does not happen by accident. Before any charter our people are buying the best fresh fruit - not at 9.00 am when the best has gone but at 6.00am when the best is arriving. Fresh flowers, fresh breads, delicious food are all ingredients that go in to making the day special. Customers have already commented:

**"After a day like this where else could we go to charter?"**



**"The crew are simply fantastic"**



### ITINERARY: 3009

### SIMILAN ADVENTURE

The Similan Islands are an un-missable spectacle with the clearest waters imaginable. Situated approximately 50 miles north west of Phuket. This archipelago is listed in the top ten dive sites in the World and offer an abundance of sea life to all visitors as well as the coral-sand beaches which can be deserted.

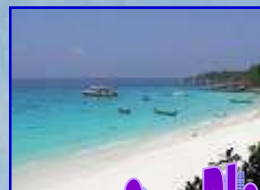
Experience what few others in the world have seen., Travel in style and comfort without the sea journey! With seaplane transfers it is now possible to experience the stunning Similan Islands on a day trip!

*Subject to weather conditions. /Not available April to November*



### Itinerary:

- Pick up from your Hotel / Villa
- Transfer to yacht by Sea Plane
- Morning snack on arrival
- Cruise around Simian Islands
- At Leisure to explore beaches / swim
- Gourmet meal at anchor
- Witness the amazing sea life
- Afternoon snack
- Rendezvous with Sea Plane
- Transfer back to your Hotel / Villa



**Similan  
Islands**



**Sea Plane Transfers**



### ITINERARY: 3008

### PHI PHI ISLANDS ODYSSEY

Phi Phi Islands have become one of the most famous group of island destinations around 2 hours cruising from Phuket. They make a great overnight destination from Phuket (approx 40 nautical miles from The Royal Phuket Marina).

Abundant opportunities exist for snorkeling and swimming in the amazing blue waters of the Andaman. Snorkeling around the archipelago's coral reefs or climbing to one of the many limestone look-outs is unforgettable. The fish and coral and other undersea life on the reefs will truly amaze you. Phi Phi Don has stunning tropical beaches along its southern and eastern shores. Enjoy exploring ashore these stunning islands and experience the vibrant nightlife.



### Itinerary:

- Pick up from your Hotel / Villa
- Transfer to yacht
- Cruise to Phi Phi Islands area
- At Leisure to explore ashore / swim
- Gourmet meals at anchor
- Explore the vibrant atmosphere ashore
- Anchor overnight
- Explore more beaches / islands
- Peaceful cruise back to Marina
- Transfer back to your Hotel / Villa



**Phi Phi  
Islands**



*"The day was fantastic. To say nothing of the evening ashore"*

## EATING ABOARD



Gourmet catering is available for all our charters and is included in the charter fee. The on board catering for our yacht charters uses only the finest, freshest ingredients, from reputable suppliers. Our menus can also be planned to match your dietary requirements.

Our suppliers are all known personally to us and operate to some of the highest hygiene standards in Thailand.

Over the coming pages you will find details of our varied menus for your consideration. From authentic spicy Thai food to more traditional western fare we are sure our menus will please you.

We realize how important the catering offered onboard is to the successful charter trip. You can rest assured that we have taken great care in choosing our suppliers and menus to meet some of the most demanding needs of our clients.

Tea, Coffee, Water & Soft drinks are included in the charter fee. Alcoholic beverages are available for an additional charge.

Of course, if you wish you may choose to eat ashore at some great restaurants (at your own cost). Please ask us for advice.

*"We thought we must be at a 5 star restaurant!"*

## OUR MENUS



### Menu 1

#### Morning Snack

Mini Whole wheat Croissants filled with Tuna salad and roasted garlic peppers

Banana and Blueberry muffins with a Chocolate Nut Topping

#### Lunch

Chilled Gazpacho Soup with pepper roasted Prawns

Assorted breads and Grissini  
Traditional quiche Lorraine

Mixed garden salad with a choice of dressings

Phuket Coconut tart in sweet pastry  
Tropical fruit salad

#### Afternoon Tea Break

Cream Cheese and Chive puffs  
Traditional English Fruit Cake  
Assorted Butter  
Shortbread finger

### Menu 2

#### Morning Snack

Mushroom & spinach tartlets with Fetta Cheese  
Mini Tom Yum Seafood Pizzas  
Lemon Tartlets with Crisp Caramel Topping

#### Lunch

Avocado and Prawn Salad with Toasted Sesame Vinaigrette  
Cucumber spaghetti with Chicken threads and a mild spicy Peanut dressing  
Parma Ham and selection of Salamis with traditional pickles

Crisp Breads and salted pretzels with Farm House Butter

Exotic Fruit Trifle with Chocolate and Banana

#### Afternoon Tea Break

Smoked Salmon and Cream Cheese Sandwiches in whole wheat loaf  
Rich Chocolate and Cashew nut Brownies  
Scottish Shortbread cookies

*“Even the children were impressed with the meals!”*



#### ITINERARY: 3007

#### DAY DREAM—PHI PHI ISLANDS

Phi Phi Islands have become one of the most infamous group of island destinations around 2 hours cruising from Phuket. They make a fine day trip destination from Phuket (approx 40 nautical miles from The Royal Phuket Marina).

Abundant opportunities exist for snorkeling and swimming in the amazing blue waters of the Andaman. Snorkeling around the archipelago's coral reefs or climbing to one of the many limestone look-outs is unforgettable. The fish and coral and other undersea life on the reefs will truly amaze you. Phi Phi Don has stunning tropical beaches along its southern and eastern shores.



#### Itinerary:

- Pick up from your Hotel / Villa
- Transfer to yacht
- Morning snack underway
- Cruise to Phi Phi Islands area
- At Leisure to explore ashore / swim
- Gourmet meal at anchor
- Explore more beaches / islands
- Peaceful cruise back to Marina
- Afternoon tea underway
- Transfer back to your Hotel / Villa



#### Phi Phi Islands



*“I had read so much about the Phi Phi Islands. It's all true!”*

**ITINERARY: 3006****KRABI ODYSSEY (2 DAYS / 1 NIGHT)**

Undoubtedly one of the most idyllic beaches imaginable with crystal clear waters with beautiful corals and an abundance of colorful reef fish. Krabi's Rai-Le beach is most fully appreciated lying at anchor, watching the sunset casting its warm glow across the water.

Cruise from the Royal Phuket Marina to Krabi beach in air-conditioned comfort. aboard your private Sunseeker yacht who spirited performance is sure to excite. Explore the Islands & beaches. Eat ashore at a 5 star restaurant (or aboard). Anchor overnight with a slow cruise back the next day via more stunning beaches.

**Itinerary:**

- Pick up from your Hotel / Villa
- Transfer to yacht
- Morning snack underway
- Cruise to Krabi area
- At Leisure to explore beaches / swim
- Gourmet meals at anchor / Overnight
- Explore more beaches / islands
- Afternoon tea
- Peaceful cruise back to Marina
- Transfer back to your Hotel / Villa

**Krabi**

*"A wonderful place to visit. The children will remember this day forever"*

**Menu 3****Morning Snack**

Assorted Savoury Finger sandwiches  
Dipped Chocolate chip nut cookies  
Baked Cream Cheese Delice with Blueberry Topping

**Lunch**

Chilled Pumpkin Soup with Crisp Pancetta and butter Croutons  
Tomato Bread sticks  
Smoked Salmon Bagel or Chicken Pita Pockets  
Ploughman Platter of Cheeses and Cold Cuts  
Mixed Green Salad  
Coleslaw Asian Style  
  
Chocolate Tart with Fresh Mango and Berry Compote

**Afternoon Tea Break**

Mozzarella and sun dried tomato Brochettes  
Coffee Éclairs  
Carrot and Nut Cake with

**Menu 4  
Thai Menu****Morning Snack**

Crispy Thai Chicken Curry Puffs  
Baked Mango cheesecake with cherry topping  
Coconut macaroons

**Lunch**

Crispy Fried Chicken with Garlic and Pepper  
Grilled Phuket Seafood  
Selection of Spicy sauces  
Beef Salad in chili lime dressing  
Vegetable Fried rice  
  
Pineapple and Ginger Tart with Lemon Coulis

**Afternoon Tea Break**

Spring Rolls with Plum Sauce  
Cashew nut and Raisin Cookies  
Pandan Slice with Creamed Coconut Filling

*"The food was a wonderful, unexpected surprise. Wow!"*

## ITINERARIES

Exciting destinations abound in South East Asia, but none more so (we would suggest) than in and around the Phuket maritime area.

From world famous film locations (“The Beach” , “The Man With The Golden Gun” etc) to deserted beaches and impressive rock formations carved out of limestone. To say nothing of the spectacular, abundant marine life nestling below the surface to the spectacular caves that the local knowledge of our crews will allow you to explore in safety.

From a day charter to an extended cruise to Krabi, Phi Phi or the Similan Islands the choice of locations to enjoy is immense.

Browse through our selected itineraries over the next few pages or ask us to compile a personal itinerary just for you!

**Day Dream Charters :** One day charters

**Adventure Charters:** One Day Charter with sea Plane Transfers

**Odyssey Charters:** Extended / Overnight Charters



*“Phuket is full of wonderful surprises around every beach”*



**ITINERARY: 3005**

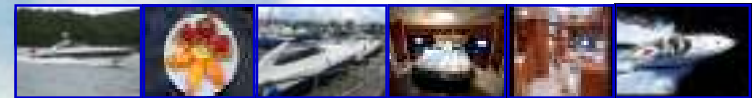
**SIMILAN ODYSSEY (2 DAYS / 1 NIGHT)**

The Similan Islands are an un-missable spectacle with the clearest waters imaginable. Situated approximately 50 miles north west of Phuket.

This archipelago is listed in the top ten dive sites in the World and offer an abundance of sea life to all visitors as well as the coral-sand beaches which can be deserted.

*Subject to weather conditions.*

*Not available April to November.*



### Itinerary:

- Pick up from your Hotel / Villa
- Transfer to yacht then cruise to:
- Similan Islands (lunch underway)
- Explore Similan Islands
- Enjoy the abundant sea life
- Overnight aboard
- Meal aboard
- Morning at leisure / explore
- Cruise back to Marina (lunch underway)
- Transfer back to your Hotel / Villa



**Similan  
Islands**



*“I was stunned by the sea life and the clear water”*



### ITINERARY: 3004 DAY DREAM—PEARL FARM & EGG ISLAND

The Pearl Farm at Ko Rang Yai Island is famous for its cultivation of quality pearls. Set on a tropical island with a nature trail pearl / gift shop this island also has its own beach and restaurant for that cool drink whilst you explore.

Later in the day cruise over to 'Egg Island' anchor then be taken ashore to 'Egg Islands' fabulous beach. Relax or swim with tropical fish. A very popular destination



#### Itinerary:

- Pick up from your Hotel / Villa
- Short cruise to Ko Rang Yai.
- Morning snack / drinks
- Visit ashore to pearl farm
- Gourmet meal at anchor
- Cruise to Egg Island. Visit beach / swim
- Afternoon Tea at anchor
- Cruise back to Marina
- Transfer back to your Hotel / Villa



**Ko Rang  
Yai  
& Egg  
Island**



*"The fish near the beach at Egg Island fed from my hand"*

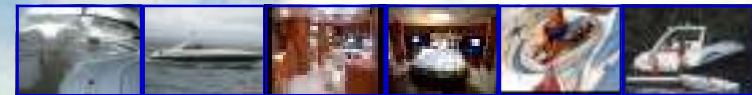


### ITINERARY: 3001

### DAY DREAM—KRABI

Undoubtedly one of the most idyllic beaches imaginable with crystal clear waters with beautiful corals and an abundance of colorful reef fish. Krabi's Rai-Le beach is most fully appreciated lying at anchor, watching the sunset casting it's warm glow across the water.

Cruise from the Royal Phuket Marina to Krabi beach in air-conditioned comfort. aboard your private Sunseeker yacht who spirited performance is sure to excite. Explore the Islands & beaches and return aboard for a gourmet meal.



#### Itinerary:

- Pick up from your Hotel / Villa
- Transfer to yacht
- Cruise to Krabi area
- Morning snack at sea
- At Leisure to explore beaches / swim
- Cruise to another Island / Beach of Krabi
- Gourmet lunch at anchor
- Peaceful cruise back to Marina
- Afternoon snack at sea
- Transfer back to your Hotel / Villa



**KRABI BEACH**



*"The beaches near Krabi are amazing"*

**ITINERARY: 3002****PHI PHI ADVENTURE**

The Phi Phi Islands have become one of the most famous group of island destinations around 2 hours cruising from Phuket. They make a fine day trip destination from Phuket (approx 40 nautical miles from The Royal Phuket Marina). Abundant opportunities exist for snorkeling and swimming in the amazing blue waters of the Andaman. Snorkeling around the archipelago's coral reefs or climbing to one of the many limestone lookouts is unforgettable. The fish and coral and other undersea life on the reefs will truly amaze you. Phi Phi Don has stunning tropical beaches along its southern and eastern shores

**Itinerary:**

- Pick up from your Hotel / Villa
- Transfer to your private yacht by Sea Plane
- Morning snack at anchor
- Cruise around Phi Phi Islands
- Gourmet meal at anchor
- At Leisure to explore beaches / swim
- Cruise to Maya Bay / Beach
- Afternoon Tea at anchor
- Rendezvous with Sea Plane
- Transfer back to your Hotel / Villa

**Sea Plane Transfers**

**Phi Phi Islands**

*"We will never forget the Seaplane. It was unbelievable to arrive at our private yacht in such style"*

**ITINERARY: 3003****DAY DREAM—JAMES BOND ISLAND**

Phang Nga Bay is infamous for the amazing limestone sea-mountains that rise vertically, seemingly unending, out of the calm turquoise waters.

This is home to "James Bond Island." Phang Nga Bay provides year round protection from the elements with stunning beauty. Northeast from Phuket, you will arrive at Phang Nga National Park. This area is truly awe-inspiring, with its limestone cliffs rising from calm, misty waters. There are a large variety of anchorages to explore. This area combines breath-taking scenery with a sense of true serenity

**Itinerary:**

- Pick up from your Hotel / Villa
- Cruise to James Bond Island
- Visit ashore
- Morning snack / drinks
- Cruise to Koh Hong
- Gourmet meal at anchor
- Visit beach / swim
- Cruise back to Marina
- Afternoon Tea
- Transfer back to your Hotel / Villa

**James Bond Island**

*"I remember the scene from the film. An outstanding memory to have actually been there"*